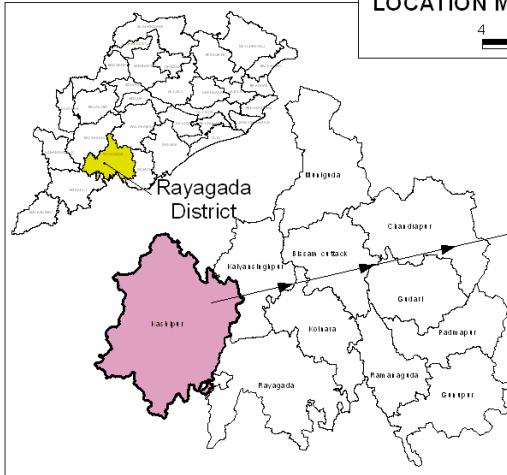


### LOCATION MAP OF KASHIPUR BLOCK

4 0 4 8 Kilometers



- Health Units**
- ✚ CHC
  - PHC(NEW)
  - Subcenter
- Roads**
- Major Roads
  - Other Roads
- Water Bodies**
- Water Bodies
  - Rivers
- Forest Area**
- Forest Area
- Village**
- Village
- Block Boundary**
- Block Boundary



Mission Directorate  
NRHM, Orissa.



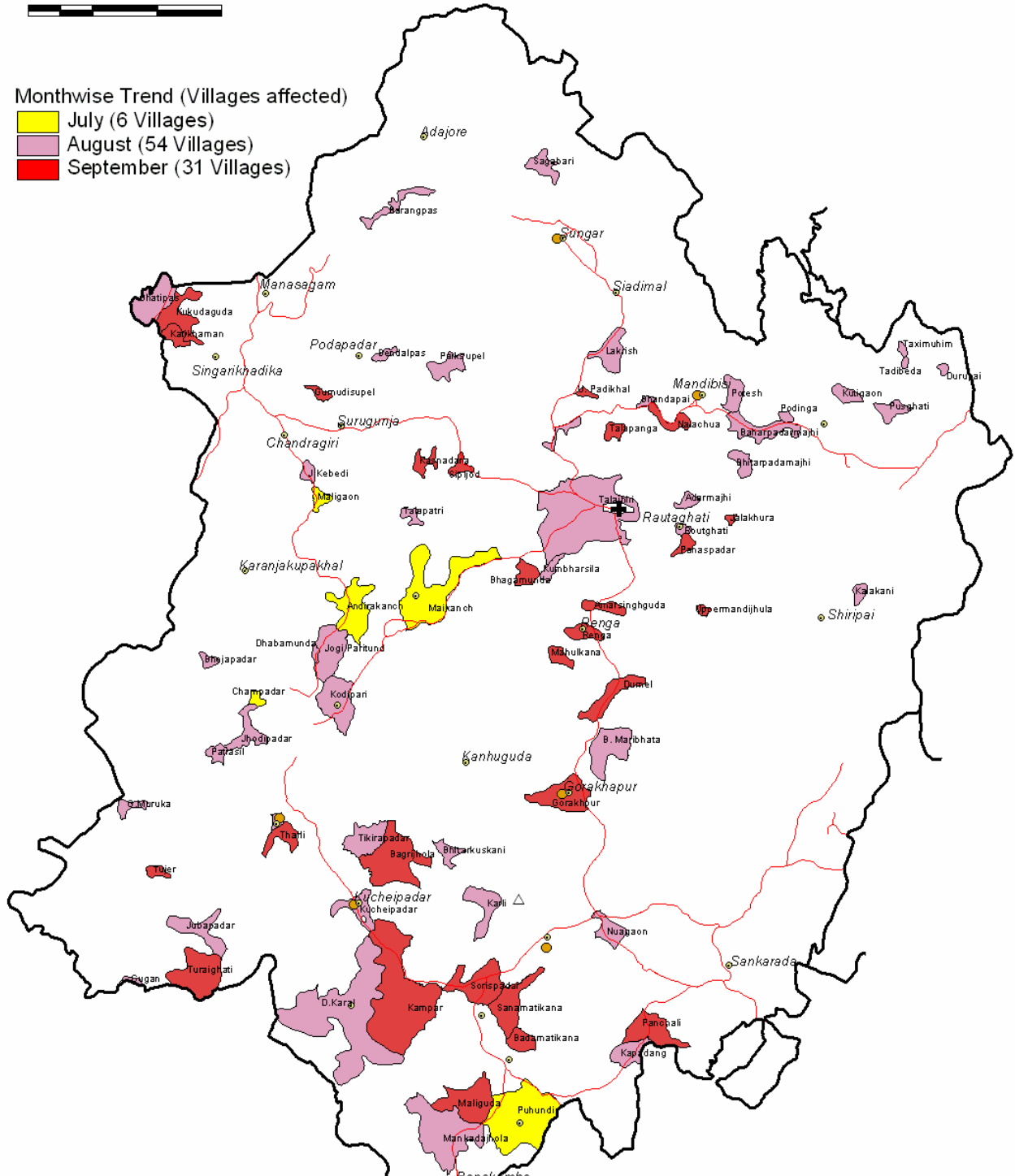


# MAP SHOWING ONSET AND TREND OF DIARRHEA ATTACK IN VARIOUS VILLAGES OF KASHIPUR BLOCK (from July to September)

3 0 3 6 Kilometers

## Monthwise Trend (Villages affected)

- July (6 Villages)
- August (54 Villages)
- September (31 Villages)

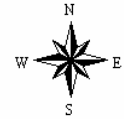


- Health Units**
- CHC
  - PHC(NEW)
  - Subcenter
- Major Roads
- Village
- Block Boundary

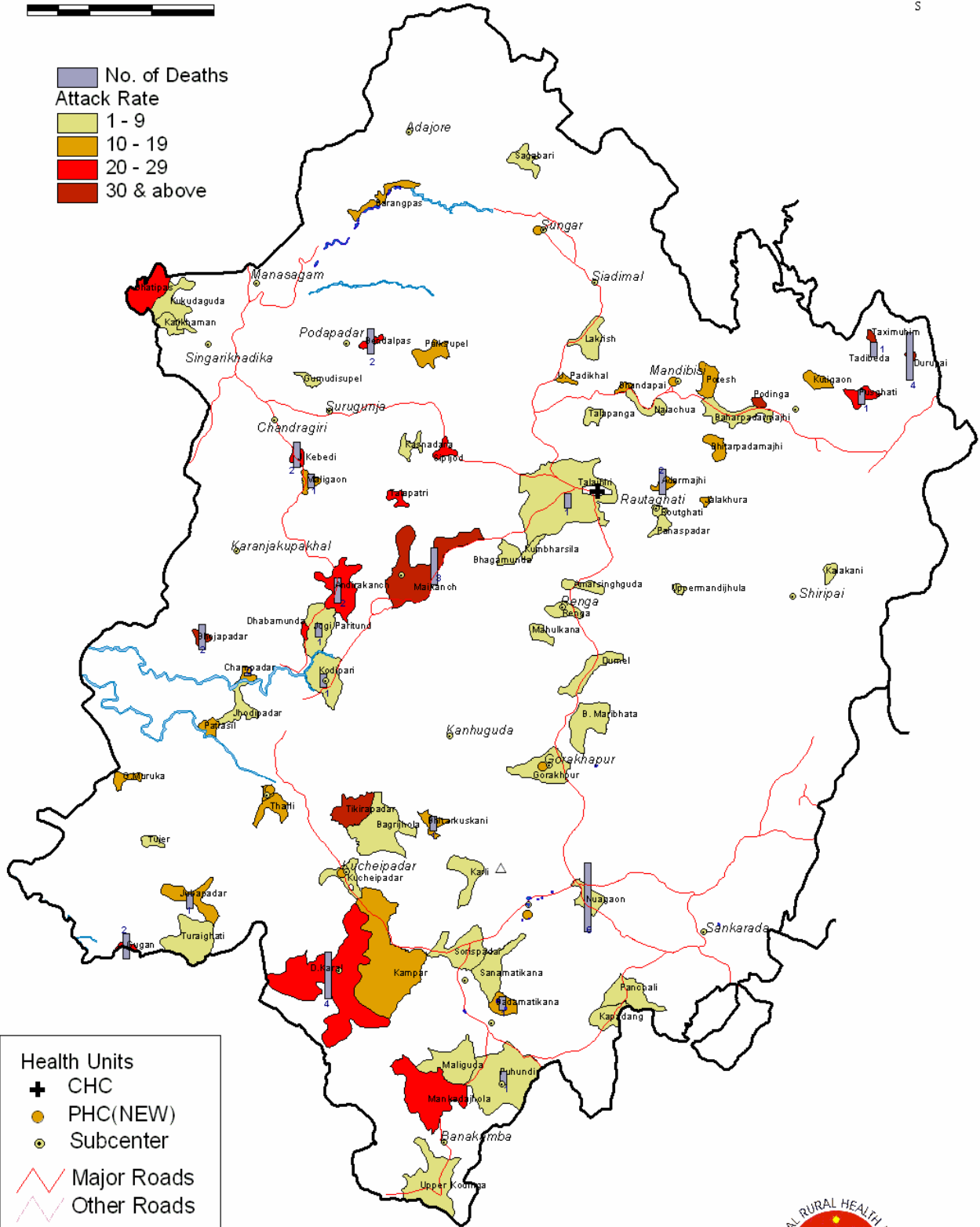
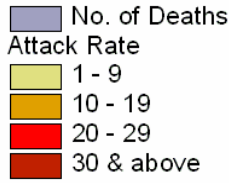


Mission Directorate  
NRHM, Orissa.

# NUMBER OF DEATH IN COMPARISION TO ATTACK RATE IN VARIOUS DIARRHEA AFFECTED VILLAGES IN KASHIPUR BLOCK



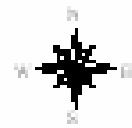
3 0 3 6 Kilometers



Mission Directorate  
NRHM, Orissa.

# MAP SHOWING ATTACK RATE IN VARIOUS GRAM PANCHAYAT OF KASHIPUR BLOCK

3 0 3 6 Kilometers

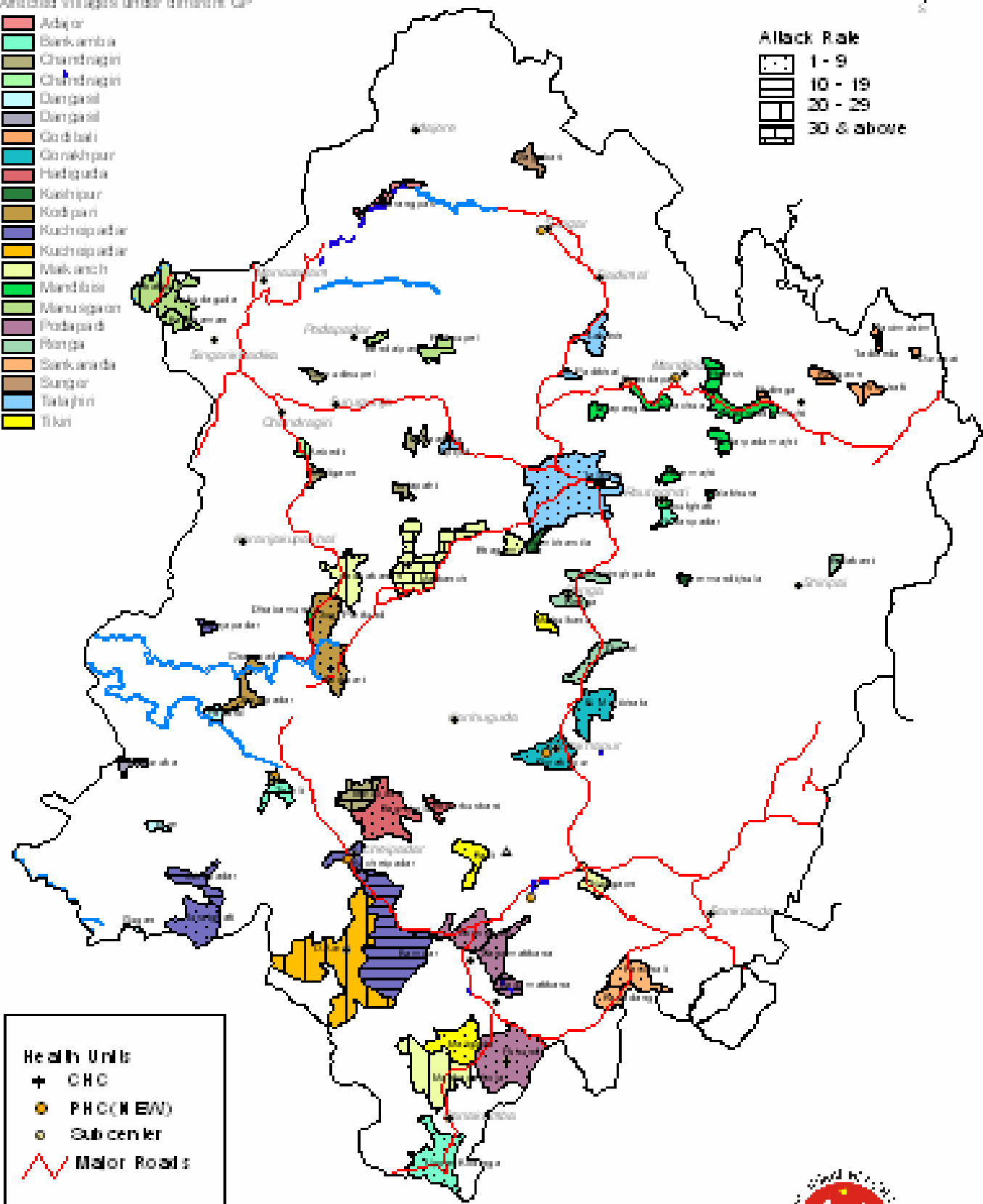


## Affected Villages under different GP

- Adajar
- Barkamba
- Chandragiri
- Chandragiri
- Dangail
- Dangail
- Go d bali
- Go nek pur
- Hatiguda
- Kashipur
- Kod pur
- Kuchrap ad ar
- Kuchrap ad ar
- Mak ansh
- Mand bali
- Manu sgar an
- Phoda par d
- Ranga
- Sank an d a
- Sungur
- Talagar
- Tikar

## Attack Rate

- 1 - 9
- 10 - 19
- 20 - 29
- 30 & above



- ### Health Units
- + CHC
  - ★ PHC (M EW)
  - Subcenter
  - Major Roads
- ### Water Bodies
- Wells
  - Rivers
  - Village
  - Block Boundary



Miss. Directorate  
NRHM, Orissa.