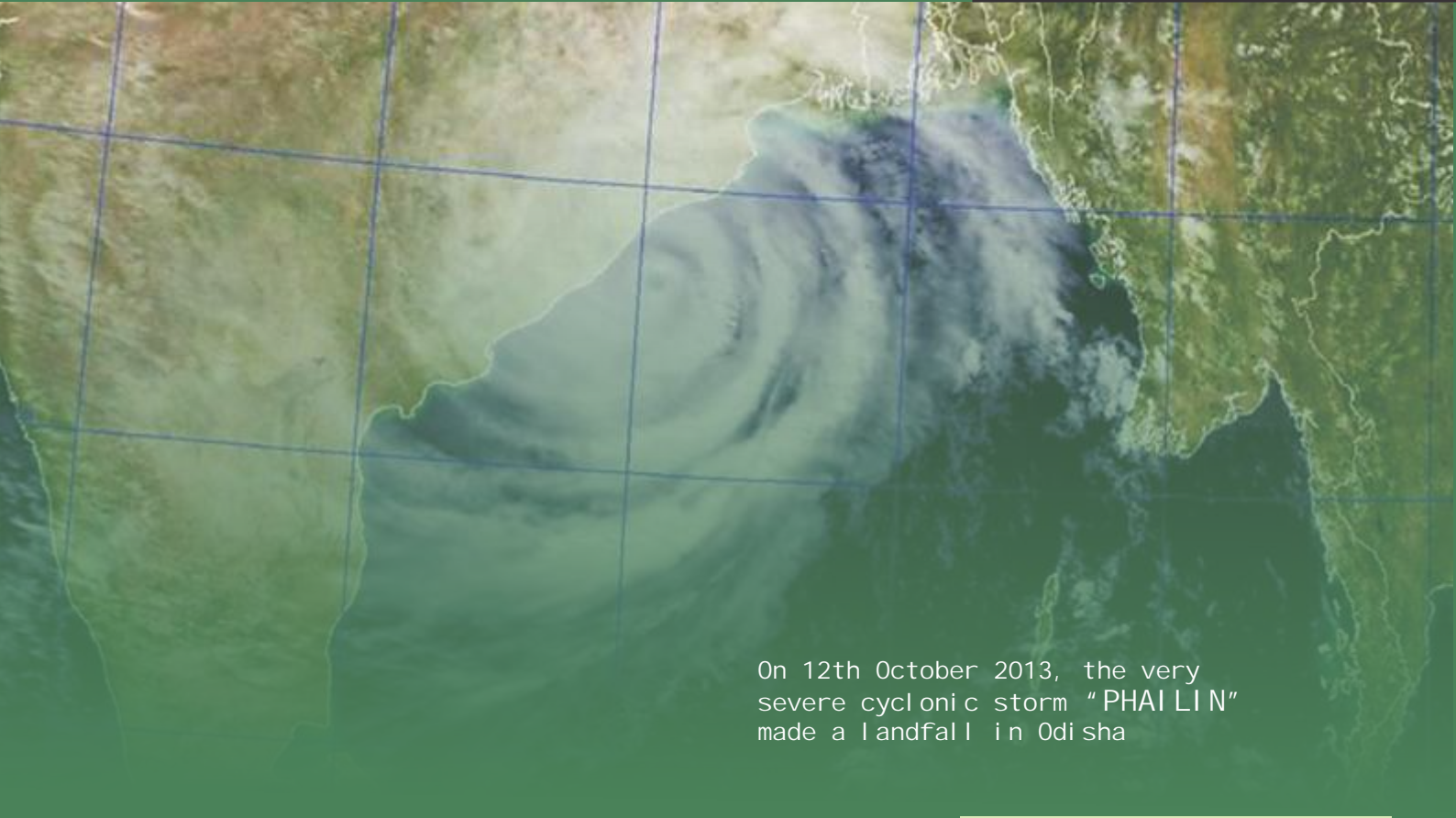


# Health Report for Emergencies

Odisha  
2013



On 12th October 2013, the very severe cyclonic storm "PHAILIN" made a landfall in Odisha



Pregnant mothers and elderly couples were tracked and **sms alerts** sent to rescue and evacuate them to a health service delivery point.



Designated front line workers were sent to **283 medical relief centers** across 7 districts.



**Baby 'Phailin'** was born inside a 108 ambulance at 4.30am of 13<sup>th</sup> October when the cyclone was at peak with heavy rains and winds blowing at high speed.



Department of Health and Family Welfare,  
Government of Odisha



## Prioritising health services

### **Sphere Standard :**

*All people have access to health services that are prioritised to address the main causes of excess mortality and morbidity.*

## Countdown steps on Emergency Response

### The trigger - cyclone alert received at 2.03 pm on 08.10.2013 from Indian Meteorological Department (IMD)

#### Immediate decisions -

- a. 24/7 control rooms to be opened at State level and in 14 districts, and all blocks in these districts and accordingly instructions issued.
- b. Immediate assessment of stock position of essential medicines such as Oral Rehydration Salts (ORS) , Chlorine Tablets, Anti Snake Venom (ASV) injections, dressing materials, bleaching powder, anti diarrhoeals, anti pyretic at all levels starting from State level warehouses, district warehouses, and all institutions from District Headquarter Hospital (DHH) to sub centres, with instructions to replenish the stocks in coordination with State Drug Management Unit (SDMU) based on requirement.
- c. Availability of Staff in all peripheral health institutions in the alerted districts along with adequate stock and store to be ensured by CDMOs.
- d. Puja holidays of all doctors and staff cancelled
- e. Mobile Medical Teams instructed to be kept in readiness at district and sub district level
- f. Rapid Response teams to be kept in readiness
- g. All ambulances including 108 to be kept in readiness at their respective positions with adequate fuel
- h. The DHHs and SDHs to identify space and rush of patients if situation arises
- i. Blood Banks and Blood Storage Units to be kept in readiness with adequate storage of blood units.

Govt. order issued to declare Special Secretary Technical and Mission Director, NHM as nodal officers for emergency response.

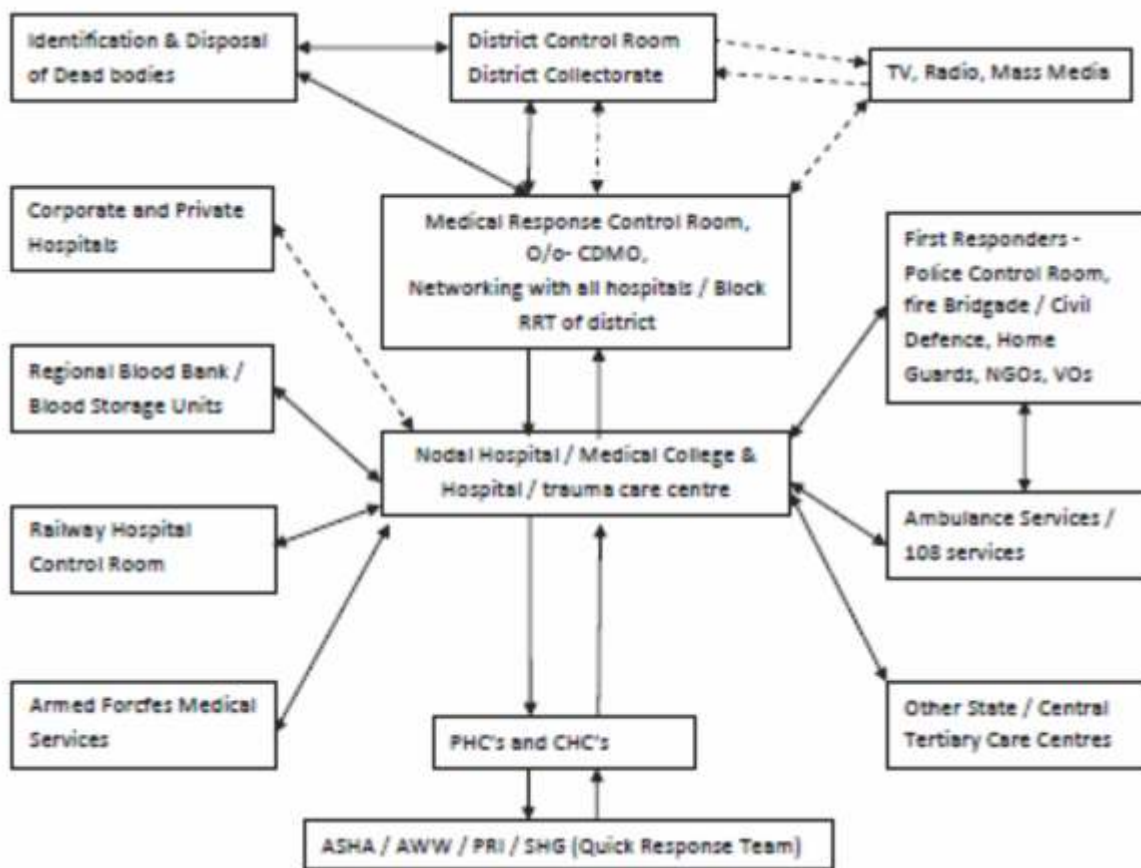
- Accordingly, instructions were issued to the CDMOs of the districts of Ganjam, Puri, Khurda, Balasore, Bhadrak, Cuttack, Jagatsinghpur, Jajpur, Kendrapada, Gajapati, Nayagarh, Mayurbhanj, Keonjhar and Dhenkanal regarding preparedness for impending cyclone.
- District health administration was instructed to attend coordination meeting on cyclone preparedness under the Chairmanship of Collector -cum-District Magistrates.
- Districts were instructed to submit preparedness reports.

### 9.10.2013: Preparedness efforts intensify...the countdown begins

Preparation and submission of micro plan for the impending cyclone by all 14 districts, on the following key areas made ready:

- a. Drug and logistic position at all institutions and warehouses,
- b. Human resources in place at district disease surveillance unit and block level, rapid response teams in place with detailed name and phone numbers,
- c. Mobile Medical Team - with phone numbers and locations finalised,
- d. Ambulances- number and location of the 108 ambulances and other ambulances for ready reference,
- e. Mobility support and procurement of fuel for generator and other logistics clearly indicated,
- f. Designated space identification for management of mass casualty if arises,
- g. Immediate funds identified for the above activities,
- h. Three Medical Colleges and other referral centers kept in readiness with additional logistics.

Activation of chain of command during disaster



- Incident Command system activated at state level and district level
- 108 Emergency Ambulance call centre generator back up was ensured; and manual mode of operations was planned as a contingency measure.

Daily review meeting begin at State by Special Secretary to Govt. and Mission Director, NHM in presence of all Directors and other Senior officials of the dept.

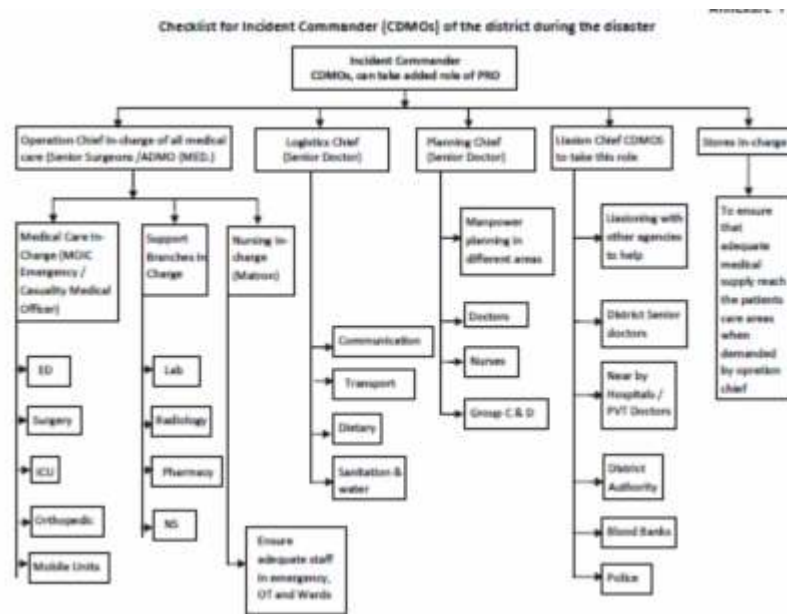
The State Drug Management Unit springs into action

- Instructions were issued from the SDMU reiterating the repositioning and availability of essential drugs and consumables in the identified health facilities to manage the ensuing cyclone.
- District authorities allowed for local purchases of drugs and consumables to the tune of 20% of their total allotted drug budget for drugs which were not available in the central drug store.



10.10.2013 : 2 days to go...

Necessary instructions and financial guidelines related to camp expenses, mobility support, per diem of staff, MHU deployment, administrative contingency, monitoring supervision and maintenance of village level health and sanitation through RKS/GKS and respective budget heads were issued from the National Health Mission (NHM), Odisha for preparedness and management of impending cyclone.



Final checklists verified and line of command set

State level supervision squads were constituted and pressed into action at each of the concerned districts to supervise the preparedness, and take immediate on the spot corrective action and finally validate the district preparation.

A quick stocktaking was taken with special focus on development of micro plan, prepositioning of drugs and logistics, ensuring alternate power supply, hospital case management of high risk pregnant and other referral cases, management of sick new born, deployment of additional manpower, constitution and deployment of state supervisory team and keeping MKCG Medical College and Capital Hospital in readiness to deal with special circumstances.

The following were reiterated :

- All emergency medicines including ASV, disinfectants, ORS and chlorine tablets to be available at all service delivery points
- Deployment of manpower at strategic points
- Prepositioning of the ambulances including 108 and MHUs
- Transfer of vaccines to the ILR points having power back up facility
- All ASHAs were instructed to attend to and keep all the pregnancy cases having Expected Date of Delivery (EDD) within 7 days ready with the birth preparedness plans . Special focus was given to identify and shift the high risk pregnancy cases to the nearest health facility.**



Pregnant mothers and elderly couples were tracked and sms alerts sent to rescue and evacuate them to a health service delivery point.

## 11.10.2013 : One day to go...

- Deployment of additional medical officers from non-vulnerable districts to Ganjam, Balasore, Kendrapara and Jagatsinghpur to meet emergency situation.
- Requisition sent to GOI for supply of emergency drugs and supplies.
- Quick stocktaking was undertaken to assess preparedness at all levels.
- State squads return in the middle of the night after having assured basic preparations in the district.

## 12.10.13 : Just before Phailin struck...

- Evacuation ordered from hospital buildings having weak roofs and lying within vulnerability zone of the coast. Safety of field health staff was given utmost importance.
- Instructions were sent for all ambulances including 108 and Janani Express to be filled with fuel, with an additional 50 liters reserve and also position in safe locations.
- Hospital managers were instructed to make extra arrangements for dry food, drinking water, and power back up with emphasis on maintenance of cold chain.
- Boat ambulances were kept in readiness at Krushnaprasad block in Puri district.
- Deployment of staff at cyclone centres was done.
- Orthopaedic surgeons were kept in readiness, especially in Ganjam district expecting high levels of orthopaedic casualty.

## PHAILIN HITS ODISHA



Ganja PHC at Ganjam is non existent



MKCG Medical Hospital with broken beds



**Baby 'Phailin' was born** inside a 108 ambulance at 4.30am on 13<sup>th</sup> October when the cyclone was at peak with heavy rains and winds blowing at 250 Km/hr.

## THE FIRST 24 HOURS AFTER PHAILIN HIT



DHH and CHCs were with back-up power and set common kitchen for patient families



Service Providers were in action in Medical Relief Centers



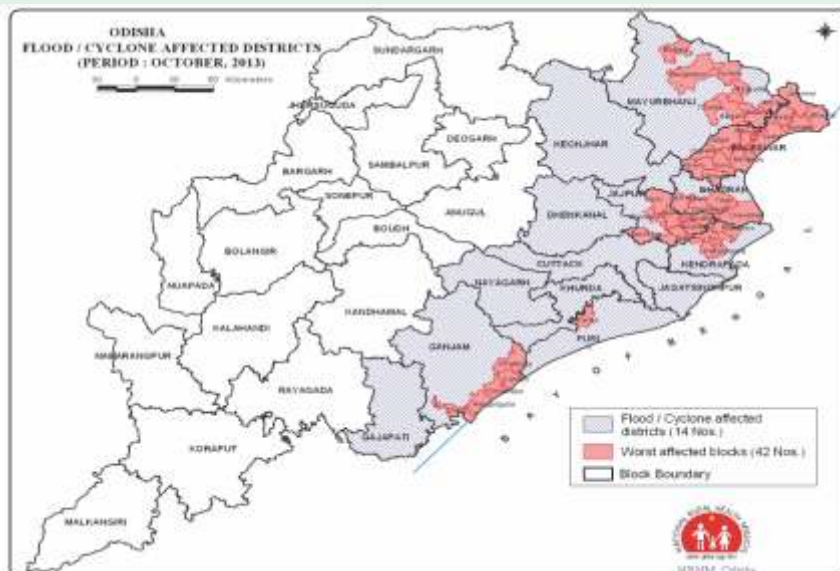
Mayurbhanj District Hospital marooned

### 13.10.13: Post assessment and ready response

The first post-cyclone review of the cyclone situation was on 13.10.13 at 9 am at the Control Room of the Directorate of Public Health

#### Key decisions/ discussions:

- Assessment done and 7 most affected districts were identified and 42 blocks therein
- GIS mapping of the affected areas done
- Calculation of additional logistics for periphery and MKCG medical college post disaster was done by technical committee
- Focus given to initiation of IEC/BCC campaign and messaging using radio, miking, leaflets etc.
- Special state level supervision team mobilised to camp at Ganjam from 14.10.13 onwards to support public health activities.
- Districts were directed to roll out the block level plans for public health management.



On 12th and 13th, 108 Ambulance Service served an average of 21,000 calls per day contrasted with an average of 13,000 calls per day during normal times. 36 pregnant women were transported in Ganjam alone, during the period of the cyclone on the 12th Oct'13, in a situation where much bigger vehicles overturned.

## Immediate follow-up steps post disaster...

1. Seven concurrent days of disinfection of all open wells and dug wells taken up under the direct supervision of Health Workers with active support of ASHAs.
2. Thrust on inter personal communication to spread the messages of hand washing, use of ORS in the event of loose motion, immediate transport to medical facility in case of fever, vomiting, diarrhoea and most importantly appropriate use of chlorine tablet in drinking water.
3. Area sanitation and disinfection activities as per local requirements with the Gaon Kalyan Samiti (GKS) being the platform for such activities.
4. Convergence with the Rural Development Department for joint monitoring and supervision of disinfection of tube wells and their platforms.
5. Surveillance activated with focus on night surveillance for early detection of any health abnormality in the area.
6. Mobile relief camps for better health services.
7. Number of mobile health units increased so as to conduct visits on daily basis of the vulnerable villages and conduct health camps.
8. Daily stock checking to ensure availability of critical drugs at all facilities.



**MKCG Medical Hospital  
started OPD**



**State teams reach Ganjam  
and northern districts**

- Immunization activities in cyclone affected areas will not be disrupted. Additional human resources sent from state level to ensure fixed immunization day activity. Logistics - ice packs, transport of vaccines, etc planned meticulously to ensure quality of immunization services. NRHM and Department teams ensure that each immunization point is accessible..
- 10 medical PG students and 25 MPHWS deployed in Ganjam in addition to existing HR to strengthen epidemiological analysis



## Prevention of epidemic remains the major thrust...



9. Relief materials that was air dropped combined with drinking water pouches and Chlorine tablets with leaflet describing usage of the same
10. IEC materials start moving to the village levels containing critical messages.
11. Additional man power requirements in terms of mobilized to vulnerable places.
12. Water samples collected for water quality testing.
13. Rectal swabs collected in cases of watery diarrhoea and bloody diarrhoea coupled with vomiting & dehydration.
14. Equal focus on strategies for containment of vector borne diseases.
15. Daily monitoring by State level squads.



ASHA and AWW assisting medical relief camps

### Support from Government of India

DOHFW has worked in close coordination with different units within the Ministry before, during and after the cyclone and greatly appreciates the technical assistance that had been provided so promptly.

The response for support to logistics has also been extremely good. All requests for ORS, bleaching powder, drugs and vaccines have been complied timely and effectively.

### Convergence:

A GoO task force has been formed under the chairmanship of Special Secretary to Govt, H & FW Department, with MD NHM, Director, Panchayati Raj, Director, Municipal administration, H & UD Department and Chief Engineer, RWSS-II, for convergent action in the health sector response and sanitation. MD NHM held separate meetings with Development Commissioner, Secretary RD, CDMO and health officials to develop a Berhampur Urban Cyclone Recovery Health Sector Plan, covering 37 wards and 150 slums. The aims of the urban plan were to improve environmental sanitation in the city with focus on slums, promote personal hygienic and sanitation, strengthen disease surveillance system to prevent and control of outbreak prone diseases like diarrhoea, dengue & malaria, and ensure availability of safe drinking water for all population in the city. The plan was envisaged to be implemented over a period of 10-15 days. At the community level, activities were jointly taken-up by ANM, ASHA and Anganwadi workers.



## Annexure 3 : Drug and essentials positioning by SDMU

Department of Health and Family Welfare - Odisha

Stock Position Of Essential Medicines at all Warehouses of the State Including Central Drug Store, Bhubaneswar

On 28/10/2013

Sl. No.	Name Of The Institution	ORS Packets(In Pouch)	I.V Fluids(In Bottle)	Tab. Halazone	Bleaching Powder(In Bag)	Tab. Paracetamol( 500 mg./250mg.)	Tab. Norfloxacin/Ciprofloxacin/Ofloxacin	Tab. Chlorine(500mg)	Tab. Metro/Oni/Tini	Inj. A.S.V	Inj. A.R.V
1	CDS BHUBANESWAR	2458625	799535	12067000	4503	4604800	8361100	0	1372000	20752	4581
2	ANGUL	11350	69433	267000	48	30500	303100		12400	745	200
3	BALASORE	295320	306896	1942000	822	686800	591341	2000000	509620	2347	750
4	BARGARH	61860	86106	93000	45	327700	646555		311500	585	310
5	BHADRAK	35500	49589	86000	238	52000	157300		63900	380	100
6	BOLANGIR	34620	103977	44000	40	371500	283000		180400	320	170
7	BOUDH	30590	19602	10000	12	10000	104140		9600	105	140
8	CUTTACK	79134	27486	90000	49	310100	383700	1000000	238300	1300	560
9	DEOGARH	22900	7107	102000	15	42500	102000		51740	335	300
10	DHENKANAL	46600	12850	380000	47	159600	366950		214100	375	270
11	GAJAPATI	18155	61474	142000	99	111450	266530		76330	240	160
12	GANIAM	105050	5211	900000	495	384400	762050	2600000	461800	287	676
13	JAGATSINGPUR	365856	25660	198700	100	927800	1185240		166420	557	200
14	JAJPUR	165980	176818	1242000	152	246400	244900		213400	1537	500
15	JHARSUGUDA	5850	23224	15000	59	148480	314500		92900	630	100
16	KALAHANDI	140300	234803	1018000	170	401100	941950		310000	740	275
17	KANDHAMAL	61660	91073	151000	9	57900	1550400		83200	440	360
18	KENDRAPARA	21580	22848	100700	39	172950	444500		64700	805	360
19	KEONJHAR	50700	109200	185000	80	84000	500300		144000	340	520

Sl. No.	Name Of The Institution	ORS Packets(In Pouch)	I.V Fluids(In Bottle)	Tab. Halazone	Bleaching Powder(In Bag)	Tab. Paracetamol( 500 mg./250mg.)	Tab. Norfloxacin/Ciprofloxacin/Ofloxacin	Tab. Chlorine(500mg)	Tab. Metro/Oni/Tini	Inj. A.S.V	Inj. A.R.V
20	KHURDA	48640	97253	508000	93	278100	568380	1000000	175000	890	320
21	KORAPUT	31746	163165	631200	115	72100	330200		64570	524	460
22	MALKANGIRI	122601	148593	299000	13	75600	303100		104400	455	344
23	MAYURBHANJ	150200	39475	72000	293	345000	913100	1000000	314700	980	260
24	NAWARANGPUR	60000	107477	53000	48	34444	585800		92500	400	320
25	NAYAGARH	67280	24650	200000	180	86000	401800	1000000	156500	830	300
26	NUAPADA	36880	14323	170000	64	20000	260200		68000	380	216
27	PURI	49780	86183	22000	200	104200	351100	1400000	73300	867	700
28	RAYAGADA	40980	43806	1180000	168	150500	166000		102900	540	520
29	SAMBALPUR	43720	111791	297000	106	105900	1480200		87400	442	100
30	SONEPUR	49760	2100	20000	20	65000	72000		6000	400	20
31	SUNDARGARH	97500	81820	389000	53	341300	548100		194000	894	680
32	CMD RGH ROURKELA	23340	6639	1000	1	46470	67850		9030	415	381
33	Director	29420	51581	108000	22	53200	401100		162920	1466	290
34	MKCGMCHBERHAMPU	12000	206662	14000	46	4151	44152		17932	1480	400
35	SCBMCHCUTTACK	3500	53207	13000	6	9890	23780		18295	800	919
36	VSSMCHBURLA	35475	634218	5000	161	17190	64182		6494	1325	580
<b>TOTAL</b>		<b>4914452</b>	<b>4105835</b>	<b>23015600</b>	<b>8611</b>	<b>10939025</b>	<b>24090600</b>	<b>10000000</b>	<b>6230251</b>	<b>45908</b>	<b>17342</b>



## Annexure 3 : Drug and essentials positioning by SDMU

Department of Health and Family Welfare - Odisha

Stock Position Of Essential Medicines at all Warehouses of the State Including Central Drug Store,Bhubaneswar

3.42pm On 12/10/2013

Sl. No.	Name Of The Institution	ORS Packets(In Pouch)	I.V Fluids(In Bottle)	Tab. Halazone	Bleaching Powder(In Bag)	Tab. Paracetamol( 500 mg./250mg.)	Tab. Norfloxacin/Ciproflo xacin/OfloXacin	Tab. Metro/Oni/Tini	Inj. A.S.V	Inj. A.R.V
1	CDS BHUBANESWAR	1628040	842410	3943000	2239	1289260	6777100	1184500	20452	6621
2	ANGUL	16050	78033	307000	67	28800	334100	20800	820	480
3	BALASORE	37980	310848	300000	251	136100	597921	169920	1547	170
4	BARGARH	84480	101581	178000	64	76000	552250	331500	700	510
5	BHADRAK	84000	50889	531000	296	101900	182400	49500	20	100
6	BOLANGIR	53720	115728	76000	85	284000	504300	150700	720	310
7	BOUDH	55590	248552	10000	52	20800	138440	14800	105	140
8	CUTTACK	76800	32261	280000	207	247100	253300	819200	1750	420
9	DEOGARH	27900	12897	102000	25	42500	149400	56740	390	300
10	DHENKANAL	60000	12100	450000	62	162000	270000	146000	470	140
11	GAJAPATI	18155	68184	142000	98	64950	314430	79330	280	180
12	GANJAM	105050	10836	3500000	282	384400	581950	461800	1246	876
13	JAGATSINGPUR	385856	30285	508700	218	957800	1023240	195020	1077	400
14	JAJPUR	150000	510600	345000	170	250000	147000	56400	750	400
15	JHARSUGUDA	41250	24800	25000	89	207900	257300	120000	640	100
16	KALAHANDI	109040	148496	722000	211	385000	1120200	220000	780	295
17	KANDHAMAL	88860	94723	291000	24	110900	1846700	101200	540	380
18	KENDRAPARA	90680	28355	455700	115	54550	462300	125000	1365	360
19	KEONJHAR	40440	118075	225000	105	87300	558700	254600	660	320
Sl. No.	Name Of The Institution	ORS Packets(In Pouch)	I.V Fluids(In Bottle)	Tab. Halazone	Bleaching Powder(In Bag)	Tab. Paracetamol( 500 mg./250mg.)	Tab. Norfloxacin/Ciproflo xacin/OfloXacin	Tab. Metro/Oni/Tini	Inj. A.S.V	Inj. A.R.V
20	KHURDA	16835	469714	1280000	137	143180	493700	217000	1117	420
21	KORAPUT	43746	166465	686200	119	87100	404300	98570	544	460
22	MALKANGIRI	131351	149593	299000	15	77600	434800	106400	490	344
23	MAYURBHANJ	150000	247058	29000	145	145000	817600	668100	532	204
24	NAWARANGPUR	60000	13640	98000	68	168000	340000	22000	300	320
25	NAYAGARH	25840	11125	724000	130	40970	502970	87500	650	180
26	NUAPADA	44580	16551	173000	70	36000	214900	78000	380	296
27	PURI	40590	87733	2082000	96	209800	475000	77500	307	400
28	RAYAGADA	45980	41306	1180000	178	181000	242400	105900	140	220
29	SAMBALPUR	53720	113941	318000	117	127400	1173900	101400	462	100
30	SONEPUR	118760	4800	20000	20	65000	50000	6000	400	20
31	SUNDARGARH	58820	95370	389000	66	108000	585000	195500	894	680
32	MKCGMCHBERHAMPU R	3000	150000	15000	27	14000	24000	7000	780	400
33	SCBMCHCUTTACK	13099	189037	5000	13	26751	67928	5780	3155	1520
34	VSSMCHBURLA	24975	632718	5000	161	17190	41732	6494	825	180
35	CMO RGH ROURKELA	26760	4198	4000	2	59420	77410	18690	425	287
36	Director CAPITALHOSPITAL	73500	61556	130000	44	60720	216780	194455	1566	780
<b>Total</b>		<b>4082847</b>	<b>5271856</b>	<b>19828600</b>	<b>6047</b>	<b>6456191</b>	<b>22213451</b>	<b>6551099</b>	<b>47259</b>	<b>19253</b>

## Annexure 1 : Progressive Disease Surveillance Report from 14.10.13 to 27.10.13 Part A

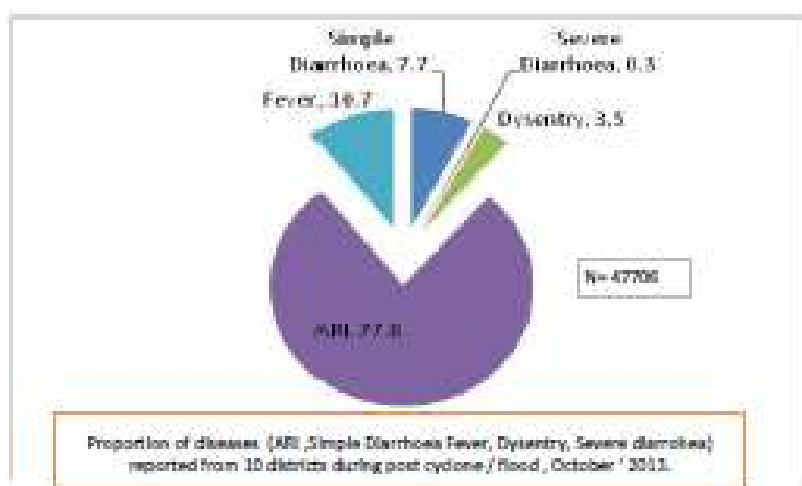
Progressive Disease Surveillance Daily Report (14.10.13 to 27.10.13) compiled on 27.10.13

Sl No	Name of the districts affected	Blocks affected	Single Diarrhoea		Severe Diarrhoea		Dysentery		ARI		Fever		Malaria		Snake Bites		DPS Distributors #	Halozon Distributed
			Cases	Deaths	Cases	Deaths	Cases	Deaths	Cases	Deaths	Cases	Deaths	Cases	Deaths	Cases	Deaths		
1	Balesar	Bhogani	150	0	9	0	13	0	1057	0	696	0	0	0	0	0	7040	294000
		Jaleswar	3	0	12	0	0	0	3340	0	198	0	0	0	2	0	9743	119504
		Balappal	120	0	0	0	128	0	2298	0	306	0	0	0	5	2	15850	74000
		Basta	95	0	2	0	295	0	1115	0	270	0	0	0	5	0	8210	37892
		Bader	110	0	15	0	91	0	1758	0	153	0	0	0	12	0	23402	161500
		Bemuna	40	0	0	0	0	0	3047	0	0	0	0	0	2	0	91402	105010
		Hilagin	59	0	3	0	21	0	580	0	3	0	0	0	0	0	10858	22010
		Sora	0	0	4	0	10	0	229	0	12	0	0	0	0	0	17114	17140
		Cupada	0	0	4	0	1	0	90	0	1	0	0	0	0	0	7979	95850
		Simalia	3	0	4	0	0	0	229	0	0	0	0	0	0	0	5295	35850
		Khata	0	0	0	0	0	0	137	0	0	0	0	0	0	0	4379	48850
		Bahanaga	3	0	4	0	0	0	238	0	0	0	0	0	0	0	11820	25800
		<b>Total</b>	<b>695</b>	<b>0</b>	<b>57</b>	<b>0</b>	<b>539</b>	<b>0</b>	<b>12990</b>	<b>0</b>	<b>1889</b>	<b>0</b>	<b>0</b>	<b>27</b>	<b>2</b>	<b>212499</b>	<b>1043294</b>	
2	Bhadrak	Bhandarpokhar	14	0	11	0	22	0	57	0	0	0	0	0	3	0	1445	37290
		Chandabil	10	0	9	0	58	0	549	0	50	0	0	0	7	1	1940	54590
		Chananagar	130	0	1	0	224	0	2109	0	59	0	0	0	2	0	9745	402000
		Thidi	4	0	0	0	15	0	1302	0	43	0	0	0	8	0	3834	101300
		<b>Total</b>	<b>162</b>	<b>0</b>	<b>21</b>	<b>0</b>	<b>329</b>	<b>0</b>	<b>4677</b>	<b>0</b>	<b>154</b>	<b>0</b>	<b>0</b>	<b>0</b>	<b>18</b>	<b>1</b>	<b>12764</b>	<b>596199</b>
3	Jagpur	Dasrathpur	450	0	0	0	0	0	1121	0	55	0	0	0	0	0	12840	81711
		Bari	59	0	0	0	58	0	482	0	157	0	0	0	5	0	9220	19819
		Jajpur	254	0	0	0	82	0	1109	0	51	0	0	0	1	0	2540	72800
		Korai	179	0	0	0	21	0	958	0	81	0	0	0	1	0	4891	59225
		Rasulpur	0	0	0	0	0	0	0	0	0	0	0	0	0	0	295	4170
		Bijhatpur	87	0	0	0	27	0	75	0	9	0	0	0	2	0	4950	83490
		Basachana	55	0	0	0	17	0	483	0	0	0	0	0	0	0	10625	64940
		<b>Total</b>	<b>1130</b>	<b>0</b>	<b>0</b>	<b>0</b>	<b>215</b>	<b>0</b>	<b>4298</b>	<b>0</b>	<b>343</b>	<b>0</b>	<b>0</b>	<b>0</b>	<b>8</b>	<b>0</b>	<b>44737</b>	<b>529894</b>
4	Kandhamal	Aul	0	0	0	0	73	0	354	0	0	0	0	0	1	0	2069	33000
		Indipur	0	0	0	0	0	0	73	0	0	0	0	0	0	0	221	9490
		Pattanunda	0	0	11	0	2	0	3973	0	0	0	0	0	0	0	2548	32490
		Pajarianika	0	0	3	0	7	0	388	0	0	0	0	0	0	0	1321	25145
		<b>Total</b>	<b>0</b>	<b>0</b>	<b>14</b>	<b>0</b>	<b>81</b>	<b>0</b>	<b>4888</b>	<b>0</b>	<b>0</b>	<b>0</b>	<b>0</b>	<b>0</b>	<b>1</b>	<b>0</b>	<b>8257</b>	<b>119045</b>
5	Puri	Kanai	3	0	3	0	24	0	905	0	251	0	0	0	2	0	14164	481500
		<b>Total</b>	<b>3</b>	<b>0</b>	<b>3</b>	<b>0</b>	<b>24</b>	<b>0</b>	<b>905</b>	<b>0</b>	<b>251</b>	<b>0</b>	<b>0</b>	<b>0</b>	<b>2</b>	<b>0</b>	<b>14164</b>	<b>481500</b>
6	Mayurbhanj	Barpada Municipality	179	0	0	0	29	0	915	0	12	0	0	0	0	0	11190	46790
		Badaasahi	153	0	13	0	9	0	3070	0	0	0	0	0	0	0	4302	35841
		Palana	45	0	0	0	4	0	151	0	0	0	0	0	0	0	7000	9800
		R.G.Pur	39	0	0	0	3	0	400	0	0	0	0	0	0	0	150	2500
		Balnol	0	0	0	0	10	0	850	0	0	0	0	0	0	0	1850	15300
		Khunta	0	0	0	0	3	0	658	0	0	0	0	0	0	0	206	2290
		Bijuala	0	0	0	0	0	0	11	0	0	0	0	0	0	0	58	1700
		R.C.Pur	14	0	0	0	3	0	89	0	4	0	0	0	0	0	288	11700
		Rangamati	23	0	0	0	0	0	159	0	0	0	0	0	0	0	425	1890
		Bangitpoli	29	0	0	0	0	0	205	0	5	0	0	0	0	0	408	8298
<b>Total</b>	<b>481</b>	<b>0</b>	<b>13</b>	<b>0</b>	<b>81</b>	<b>0</b>	<b>6894</b>	<b>0</b>	<b>21</b>	<b>0</b>	<b>0</b>	<b>0</b>	<b>0</b>	<b>0</b>	<b>38278</b>	<b>133387</b>		
7	Ganjam	Khandadoul	258	0	2	0	175	0	1367	0	937	0	0	0	3	0	4816	185723
		Chidi	54	0	2	0	13	0	490	0	23	0	0	0	1	0	20990	239898
		Rangellunda	425	0	11	0	120	0	800	0	779	0	5	0	0	0	6358	511800
		Munipentha	254	0	12	0	8	0	590	0	493	0	0	0	2	2	4139	374248
		Khalikote	135	0	7	0	48	0	497	0	337	0	0	0	3	0	5283	319894
<b>Total</b>	<b>1126</b>	<b>0</b>	<b>39</b>	<b>0</b>	<b>383</b>	<b>0</b>	<b>3774</b>	<b>0</b>	<b>2436</b>	<b>0</b>	<b>5</b>	<b>0</b>	<b>6</b>	<b>2</b>	<b>45128</b>	<b>1922671</b>		



Annexure 1 : Progressive Disease Surveillance Report from 14.10.13 to 27.10.13  
Part B

8	Korutla	Balanga	58	0	0	0	13	0	0	0	0	0	0	0	0	0	204	3000	
		Helede	11	0	1	0	1	0	14	0	1	0	0	0	0	0	0	272	7330
		Tangl	1	0	0	0	2	0	13	0	2	0	0	0	0	0	0	100	1550
		Jatal	1	0	0	0	1	0	0	0	1	0	0	0	0	0	0	25	500
		Bhanpur	0	0	0	0	87	0	38	0	14	0	0	0	0	0	0	1068	10325
		Bosilana	10	0	0	0	0	0	5	0	0	0	0	0	0	0	0	0	0
		Mandhatale	8	0	0	0	0	0	20	0	10	0	0	0	0	0	0	187	1870
		Total	97	0	1	0	94	0	80	0	38	0	0	0	0	0	0	1865	24875
9	Nayagari	Bhanpur	0	0	0	0	0	0	0	0	0	0	0	0	0	0	0	25	80
		Genla	0	0	0	0	0	0	0	0	0	0	0	0	0	0	0	58	512
		Khandapada	0	0	0	0	0	0	40	0	0	0	0	0	0	0	0	194	3788
		Nayagari	14	0	0	0	3	0	24	0	4	0	0	0	0	0	0	138	10800
		Dasupala	0	0	0	0	0	0	0	0	0	0	0	0	0	0	0	40	1300
		Narayan	0	0	0	0	0	0	0	0	0	0	0	0	0	0	0	175	4300
		Ranapur	0	0	0	0	0	0	0	0	0	0	0	0	0	0	0	38	1000
		Osanga	0	0	0	0	0	0	0	0	0	0	0	0	0	0	0	405	5800
Total	14	0	0	0	3	0	64	0	4	0	0	0	0	0	0	1103	27187		
10	Jagabalingur	Bellkota	5	0	0	0	0	0	14	0	1	0	0	0	0	0	0	44	150
		Total	5	0	0	0	0	0	14	0	1	0	0	0	0	0	0	44	150
Grand Total			3651	0	140	0	1081	0	37120	0	8108	0	0	0	0	0	388825	4545713	





A report in the Times of India describes how the two women even struggled to find transport to the hospital, and once they were there, they were on adjacent beds as they underwent cesarean section operations under the lights being powered by generators.

Read more at:  
<http://www.firstpost.com/india/child-born-during-cyclone-phailin-christened-after-the-natural-disaster>



The report is prepared by  
 National Rural Health Mission,  
 Department of Health and Family Welfare  
 with support from TMST, DFID.

With acknowledgement to;  
 State Control Unit  
 IDSP Cell  
 Directorate of Public Health  
 Directorate of Health Services  
 Directorate of Family Welfare  
 State Institute of Health and Family Welfare  
 State VBDCP  
 State NCD Cell  
 Cyclone and Flood affected District Administration  
 All line Departments  
 Development Partners